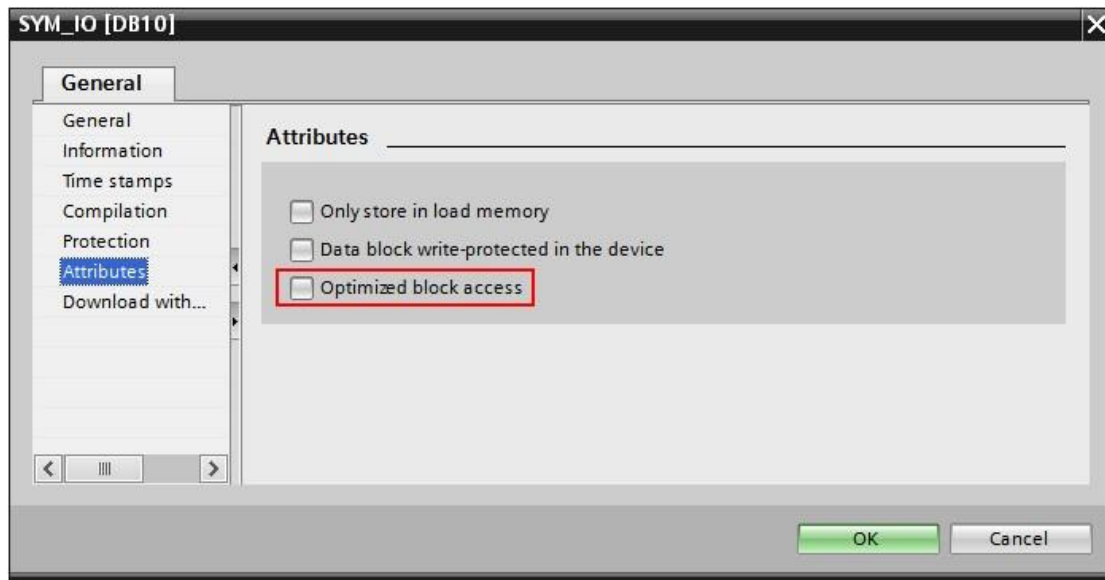


PLC Configuration Notes

1. DB property

Select the DB in the left pane under "Program blocks" and press Alt-Enter (or in the contextual menu select "Properties...")

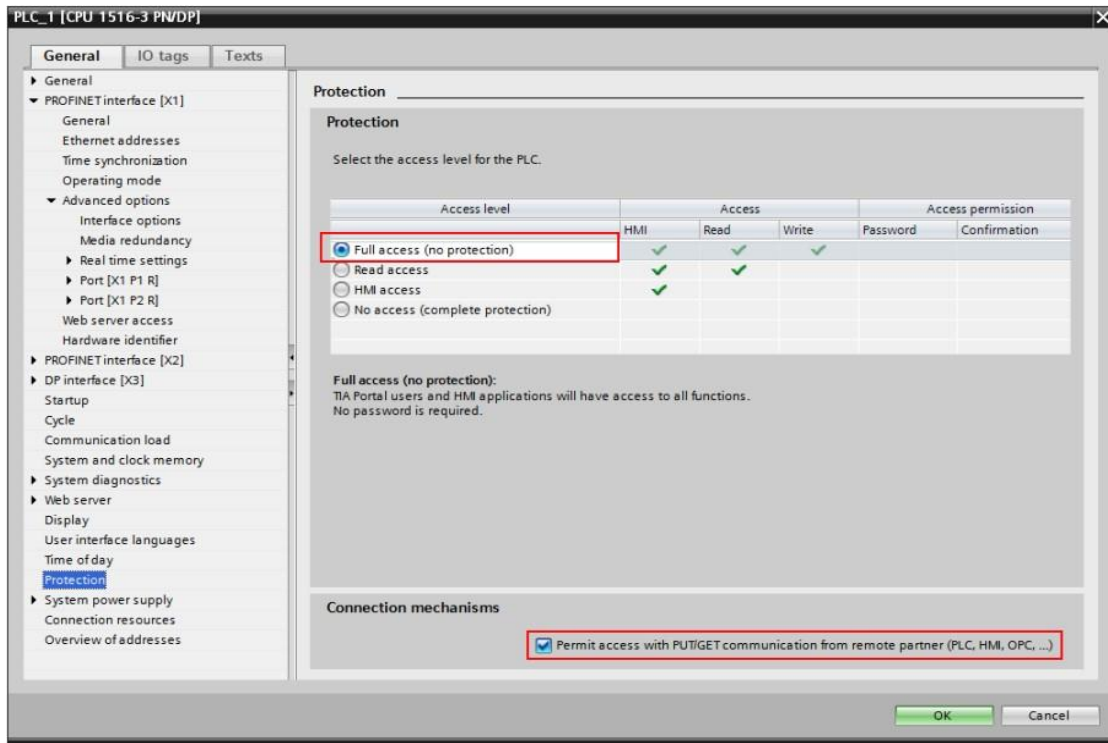
Uncheck Optimized block access, by default it's checked.



2. Protection

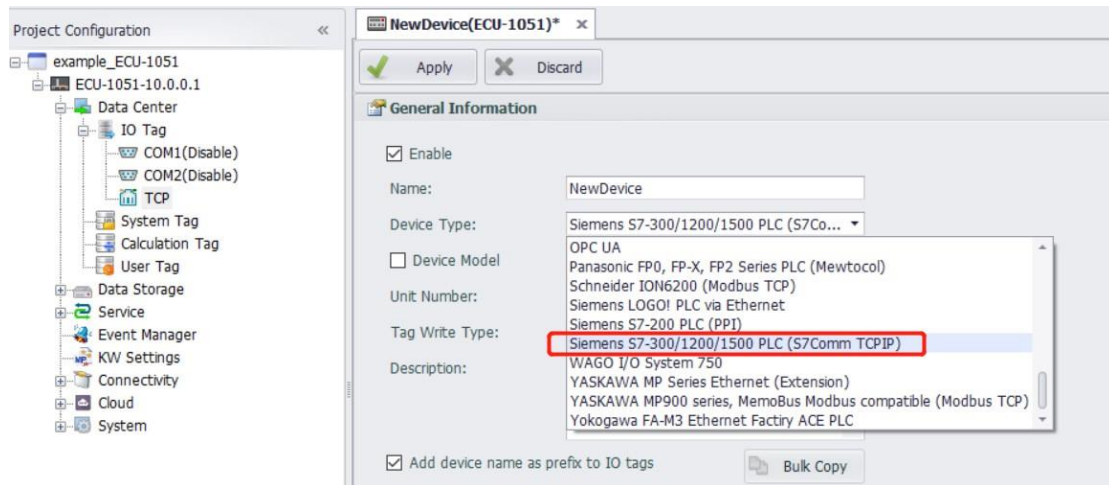
Select the CPU project in the left pane and press Alt-Enter (or in the contextual menu select "Properties...")

In the item Protection, select "Full access" and Check "Permit access with PUT/GET" as in figure.



Edgeline Configuration

1. Add device



Enable
 Name:
 Device Type:
 Device Model
Unit Number:
 Tag Write Type:
 Description:
 Add device name as prefix to IO tags

TCP/IP
IP Address:
Port Number:

Extention Properties
 Device Address (if other than Unit Number):
TSAP in Hex :Device ID, RackSlot:

Unit Number: Not the same as other device in the same interface is ok.

IP Address: The IP of the PLC.

Port Number: Default port of S7 series PLC is 102.

TSAP: S7-1200/1500 is generally fixed 01.00

2. Add Tags

New Tag
Basic
 Name:
 Data Type:
 Conversion:
 Address:
 Start Bit:
 Length(bit):
 Span High:
 Span Low:
 Initial Value:
 Scan Rate:
 Read Write:
 Description:

Advanced
 ScalingType:
 Formula:
 Scale:
 Offset:
 Clamp: Clamp to span low
 Clamp to span high
 Clamp to zero

The format of address is "DB block,Offset" Below is the details:

1) Analog Configuration

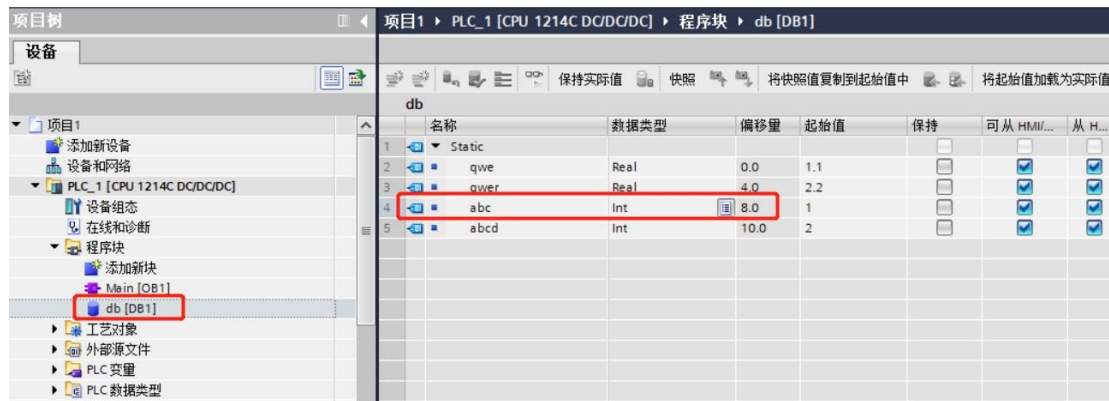
Parameter Address Description Conversion Length

参数	地址模板	描述	转换代码 (默认)	长度 (bits)	最高量程 (默认)	显示格式
DB	DB5,10	DB	Unsigned Integer	16	65535	5.0
DBB	DBB1,0	DB Byte Data		8	256	3.0
DBD	DBD1,0	DB DWord Data		32	4,294,967,296	10.0
DBW	DBW1,0	DB Word Data		16	65535	5.0
IB	IB000	Input Byte		8	256	3.0
ID	ID000	Input Dword		32	4,294,967,296	10.0
IW	IW000	Input Word		16	65535	5.0
MB	MB001	Internal Byte		8	256	3.0
MD	MD001	Internal Word		24	1,048,576	7.0
MW	MW001	Internal Dword		16	65535	5.0
PIB	PIB000	Extend Input Byte		8	256	3.0
PID	PID000	Extend Input Dword		32	4,294,967,296	10.0
PIW	PIW000	Extend Input Word		16	65535	5.0
QB	QB000	Output Byte		8	256	3.0
QD	QD000	Output Dword		32	4,294,967,296	10.0
QW	QW000	Output Word		16	65535	5.0

Example

: There is a variable "abc" in DB1 which is int and the offset is 8.

So the address should be DBW1,8.



Analog Example Table :

S7 PLC Address	Edgeline IO Configuration			
Register Address	Address	Start bit	Length	Conversion Code
DB28.DBW2	DBW28,2	0	16	Unsigned Integer
DB12.DBID86	DBD12,86	0	32	Unsigned Integer
DB2.DBB1	DBB2,1	0	8	Unsigned Integer
DB2.DBW64 (Float)	DBW2,64	0	32	Real

2) Discrete Configuration

Parameter Address Description Conversion Length
 Template Code

参数	地址模板	描述	转换代码 (默认)	长度 (bits)		
DBX	DBX1,0	DB Bit	Unsigned Integer	1		
IX	IX000	Input		1		
MX	MX000	Internal Bit		1		
QX	QX000	Output		1		

Discrete Example Table:

S7 PLC Address	Edgelink IO Configuration			
Register Address	Address	Start bit	Length	Conversion Code
I0001.2	IX0001	2	1	Unsigned Integer
I0003.5	IX0003	5	1	Unsigned Integer
Q1003.2	QX1003	2	1	Unsigned Integer